

- KEYNOTES**
- 1 DEMOLISH GLULAM COLUMN, FAUX BEAM, GLULAM DECK BEAM, AND CANTILEVERED PORTION OF OUTRIGGER BEAMS.
 - 2 W21X50 STEEL BEAM W/3X NAILER.
 - 3 3 1/8" X 16" ALASKAN YELLOW CEDAR GLULAM DECK BEAM.
 - 4 HSS 6X6X3/8" STEEL COLUMN.
 - 5 DECORATIVE STEEL DEMISING FENCE

**- TASK 3 -
VIABLE
OPTIONS**

NOT FOR CONSTRUCTION

THE INFORMATION CONTAINED HEREIN IS PROPRIETARY. THIS DOCUMENT MAY NOT BE USED OR REPRODUCED WITHOUT THE WRITTEN CONSENT OF JACKOLA ENGR. & ARCH., P.C.

**WATERSIDE BLDG 3
BALCONY REPAIR OPTIONS**
7175 US 93 S
LAKESIDE, MT, 59922

DRAWN: LWB CHECKED: IMP

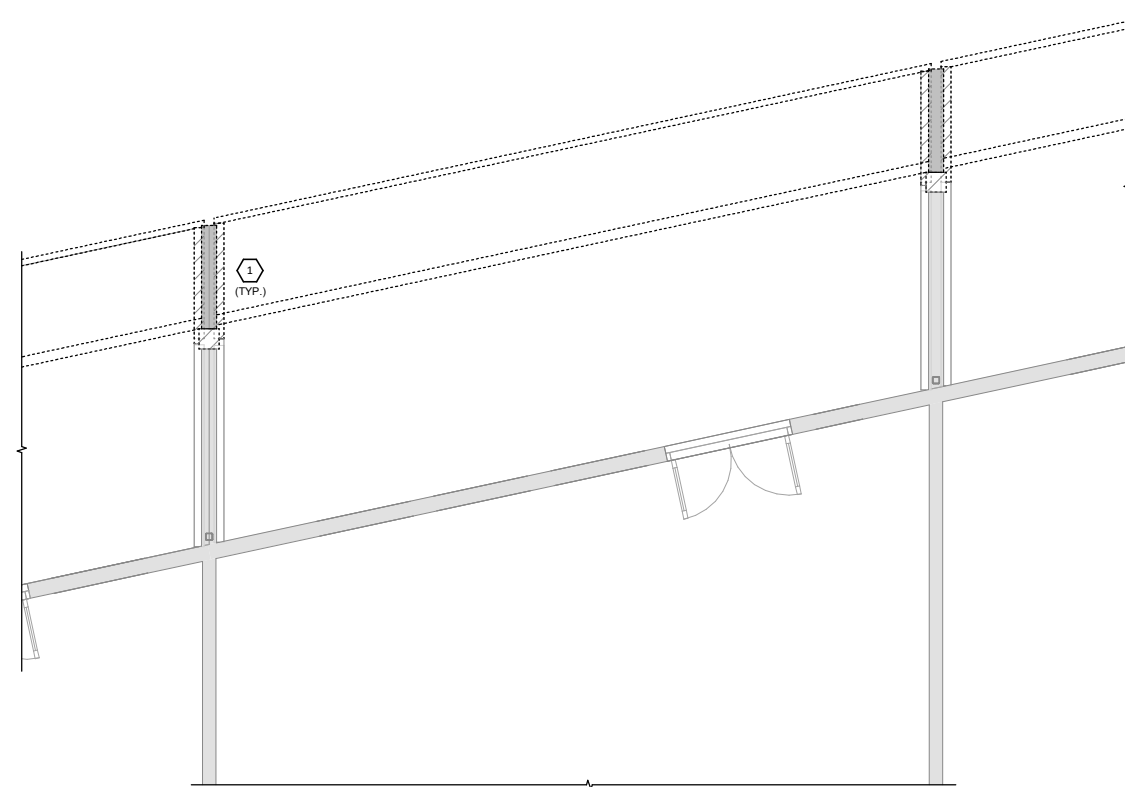
DATE: 8/7/2024

REVISIONS:

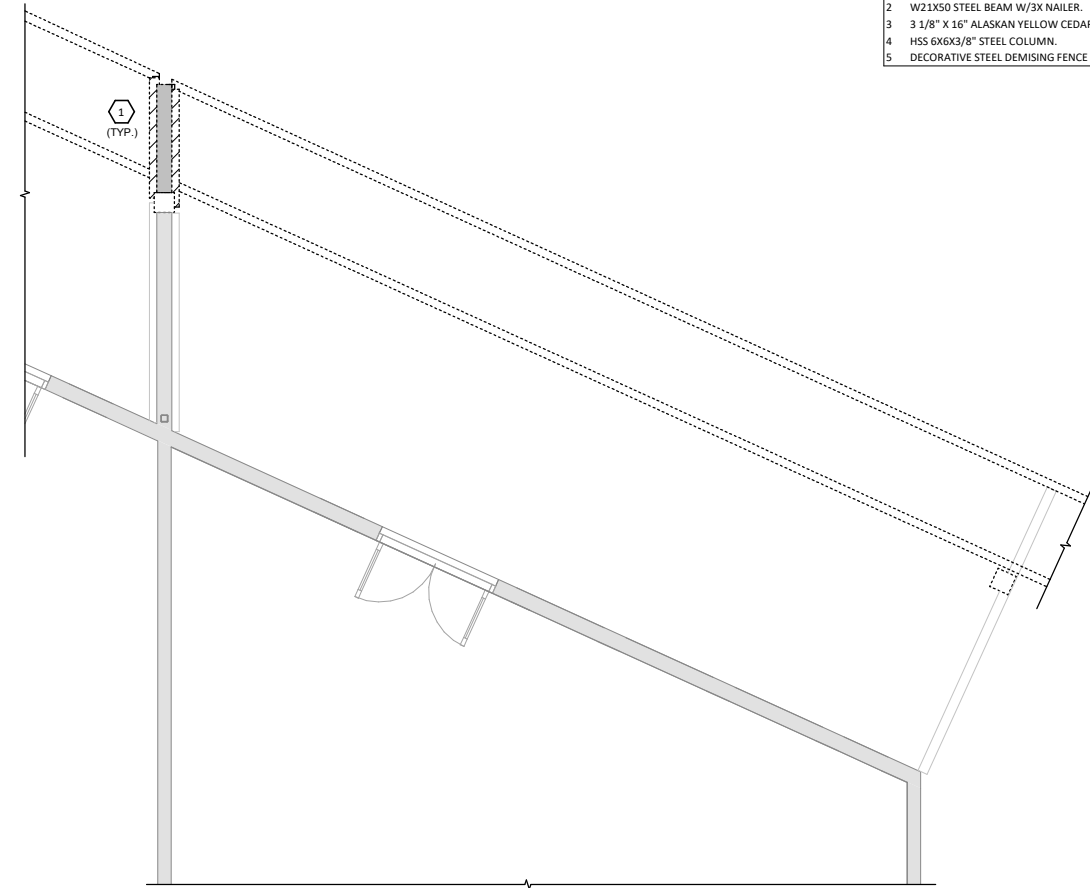
NO.	DATE	DESCRIPTION

**BALCONY
REPAIR
OPTION 1**

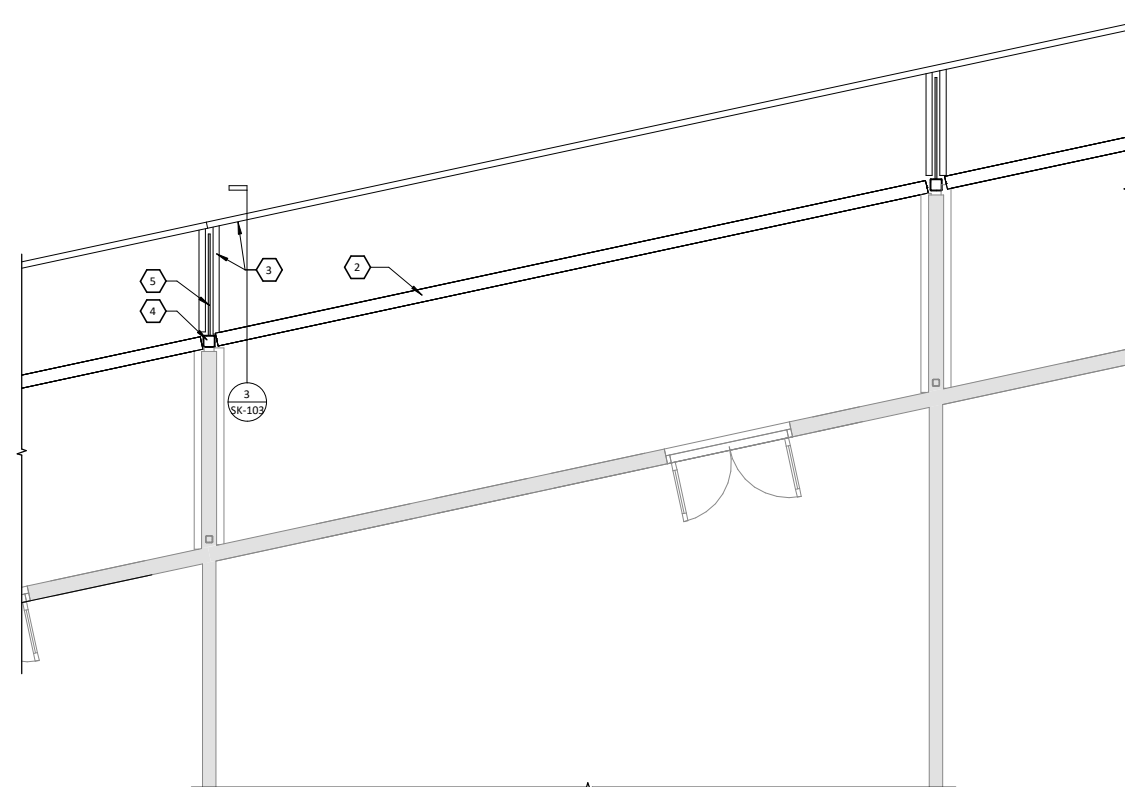
SK-101



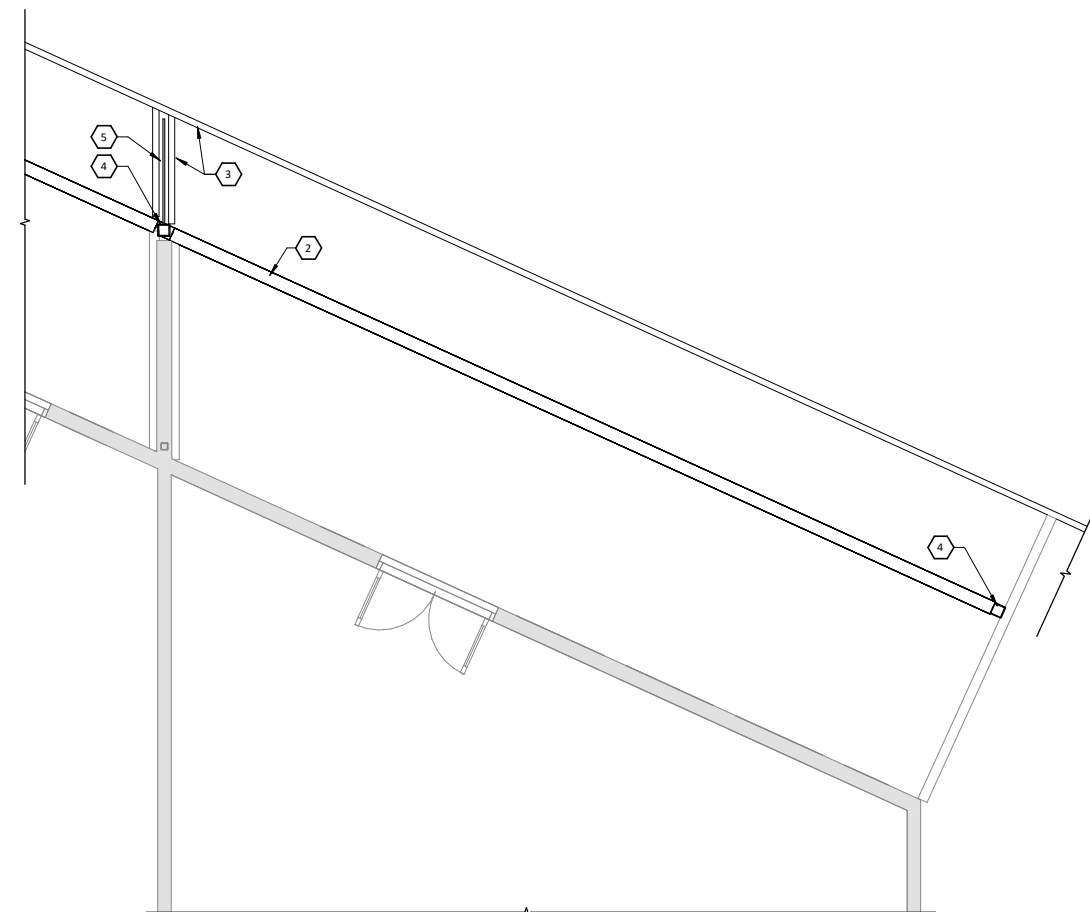
1 UNIT PLAN O DEMO PLAN
NTS



2 UNIT PLAN S DEMO PLAN
NTS



3 UNIT PLAN O NEW CONSTRUCTION PLAN
NTS



4 UNIT PLAN S NEW CONSTRUCTION PLAN
NTS

**- TASK 3 -
VIABLE
OPTIONS**

NOT FOR CONSTRUCTION

THE INFORMATION CONTAINED HEREIN IS PROPRIETARY. THIS DOCUMENT MAY NOT BE USED OR REPRODUCED WITHOUT THE WRITTEN CONSENT OF JACKOLA ENGR. & ARCH., P.C.

**WATERSIDE BLDG 3
BALCONY REPAIR OPTIONS**
7175 US 93 S
LAKESIDE, MT, 59922



① **UNIT PLAN O CAMERA VIEW 1**



③ **UNIT PLAN S CAMERA VIEW 1**



② **UNIT PLAN O CAMERA VIEW 2**



④ **UNIT PLAN S CAMERA VIEW 2**

DRAWN: LWB CHECKED: IMP

DATE: 8/7/2024

REVISIONS:

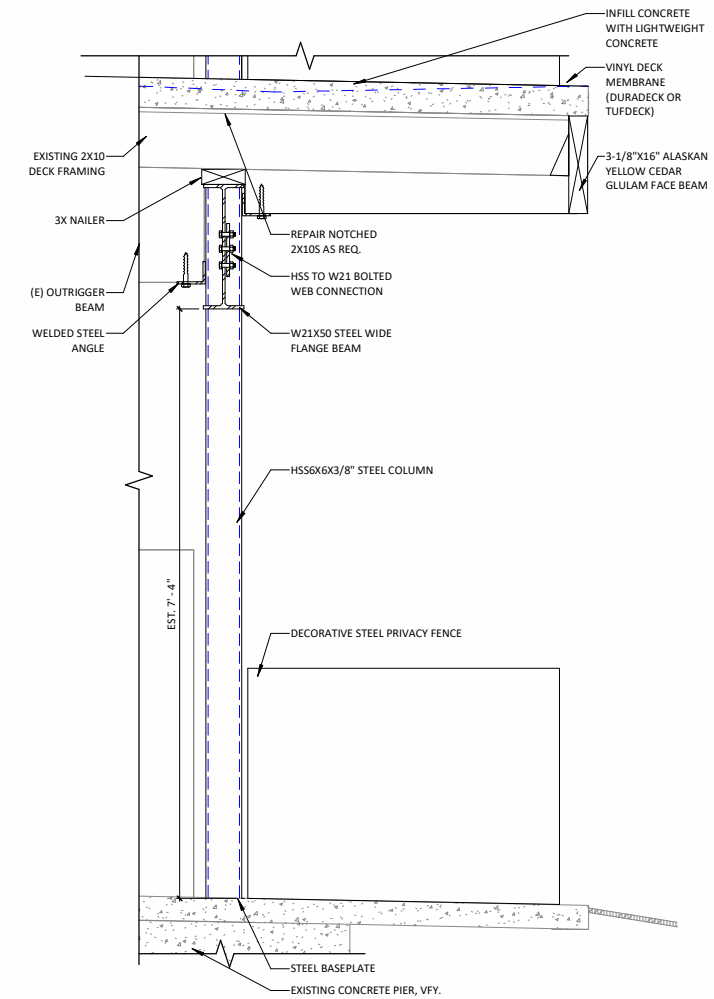
NO.	DESCRIPTION

**CAMERA VIEWS
OPTION 1**

SK-102



① UNIT PLAN O PERSPECTIVE OVERVIEW



③ TYPICAL DECK CANTILEVER
NTS



② UNIT PLAN S PERSPECTIVE OVERVIEW



**- TASK 3 -
VIABLE
OPTIONS**

NOT FOR CONSTRUCTION

THE INFORMATION CONTAINED HEREIN IS PROPRIETARY. THIS DOCUMENT MAY NOT BE USED OR REPRODUCED WITHOUT THE WRITTEN CONSENT OF JACKOLA ENGR. & ARCH., P.C.

**WATERSIDE BLDG 3
BALCONY REPAIR OPTIONS**

7175 US 93 S
LAKESIDE, MT, 59922

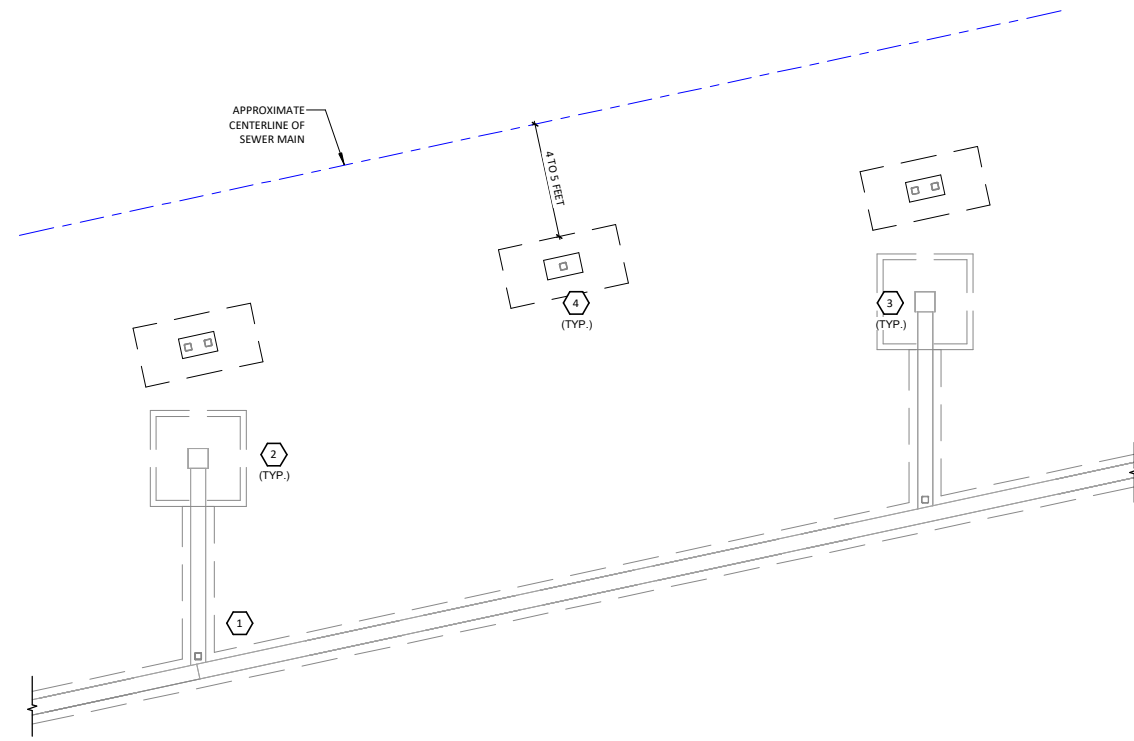
DRAWN: LWB CHECKED: IMP

DATE: 8/7/2024

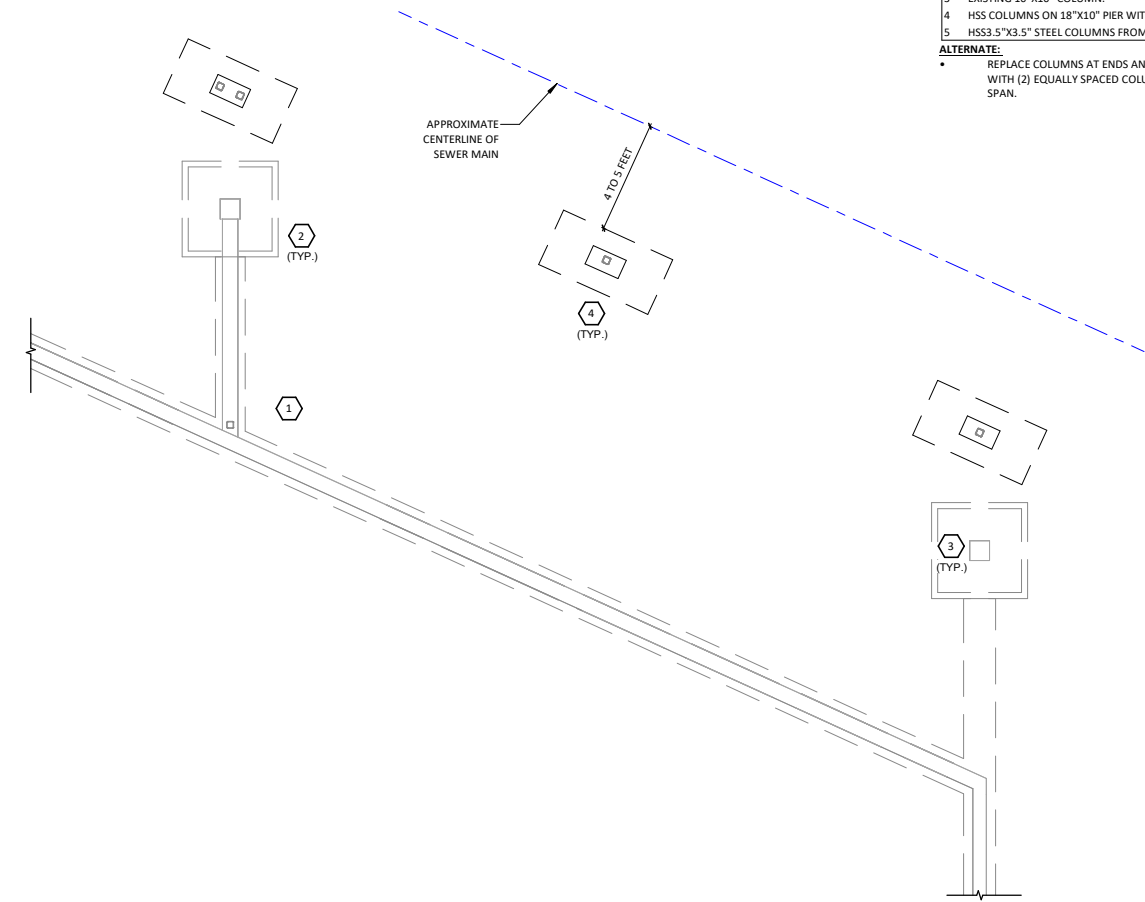
REVISIONS:

**PERSPECTIVE
OVERVIEWS
OPTION 1**

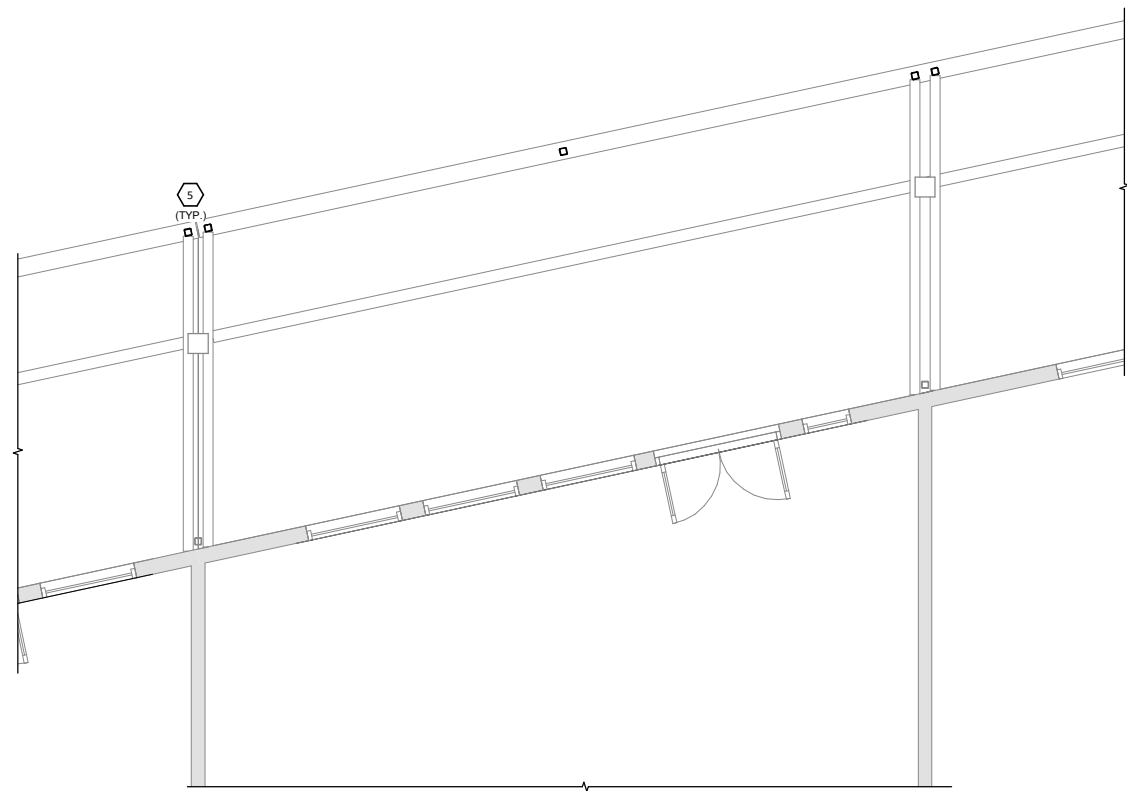
SK-103



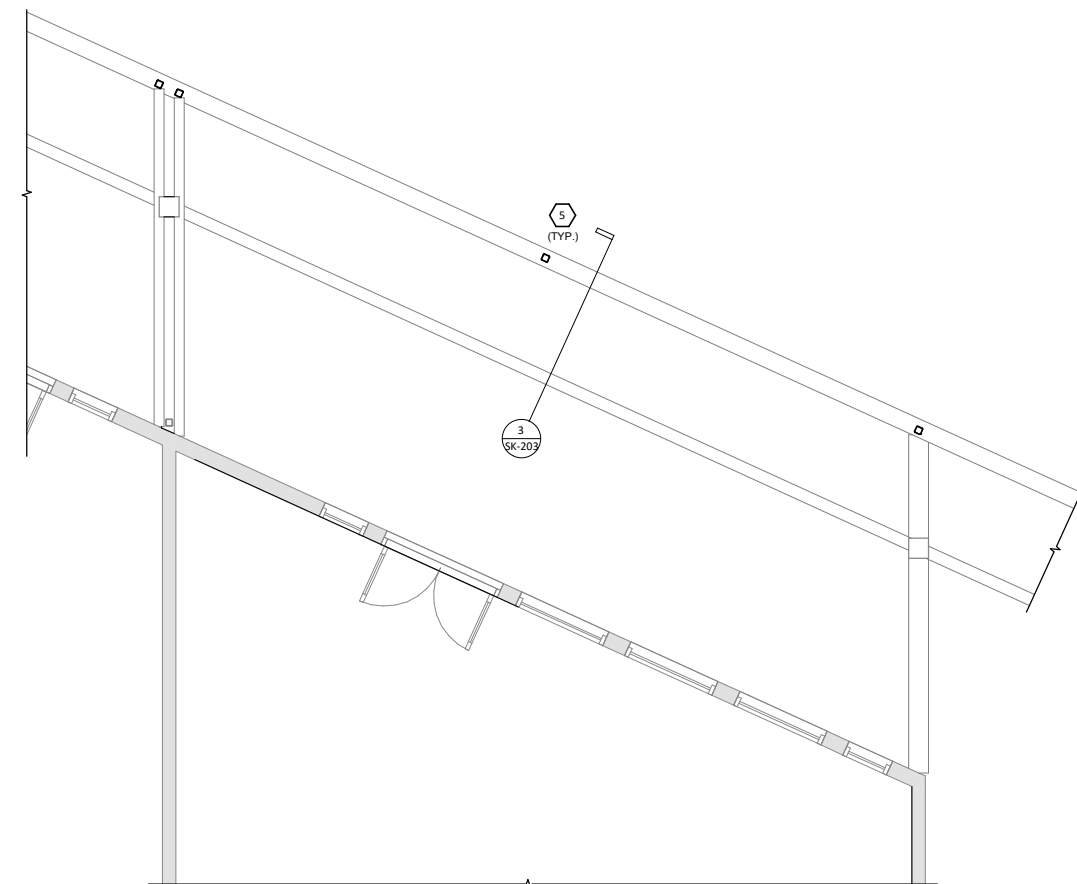
1 UNIT PLAN O FOUNDATION PLAN
NTS



3 UNIT PLAN S FOUNDATION PLAN
NTS



2 UNIT PLAN O NEW CONSTRUCTION PLAN
NTS



4 UNIT PLAN S NEW CONSTRUCTION PLAN
NTS

- KEYNOTES**
- 1 EXISTING STEM WALL.
 - 2 EXISTING PIER AND FOOTING.
 - 3 EXISTING 10"X10" COLUMN.
 - 4 HSS COLUMNS ON 18"X10" PIER WITH 30"X60" FOOTING.
 - 5 HSS3.5"X3.5" STEEL COLUMNS FROM PIER TO BOTTOM OF BEAM.
- ALTERNATE:**
REPLACE COLUMNS AT ENDS AND CENTER SPAN OF BEAM WITH (2) EQUALLY SPACED COLUMNS IN THE CENTER SPAN.



**- TASK 3 -
VIABLE
OPTIONS**

NOT FOR CONSTRUCTION

THE INFORMATION CONTAINED HEREIN IS PROPRIETARY. THIS DOCUMENT MAY NOT BE USED OR REPRODUCED WITHOUT THE WRITTEN CONSENT OF JACKOLA ENGR. & ARCH., P.C.

**WATERSIDE BLDG 3
BALCONY REPAIR OPTIONS**
7175 US 93 S
LAKESIDE, MT, 59922

DRAWN: LWB CHECKED: IMP

DATE: 8/7/2024

REVISIONS:

NO.	DATE	DESCRIPTION

**BALCONY
REPAIR
OPTION 2**

SK-201

**- TASK 3 -
 VIABLE
 OPTIONS**

NOT FOR CONSTRUCTION

THE INFORMATION CONTAINED HEREIN IS PROPRIETARY. THIS DOCUMENT MAY NOT BE USED OR REPRODUCED WITHOUT THE WRITTEN CONSENT OF JACKOLA ENGR. & ARCH., P.C.

**WATERSIDE BLDG 3
 BALCONY REPAIR OPTIONS**

7175 US 93 S
 LAKESIDE, MT, 59922

DRAWN: LWB CHECKED: IMP

DATE: 8/7/2024

REVISIONS:

**CAMERA VIEWS
 OPTION 2**

SK-202



6 UNIT PLAN O CAMERA VIEW 3



5 UNIT PLAN S CAMERA VIEW 3



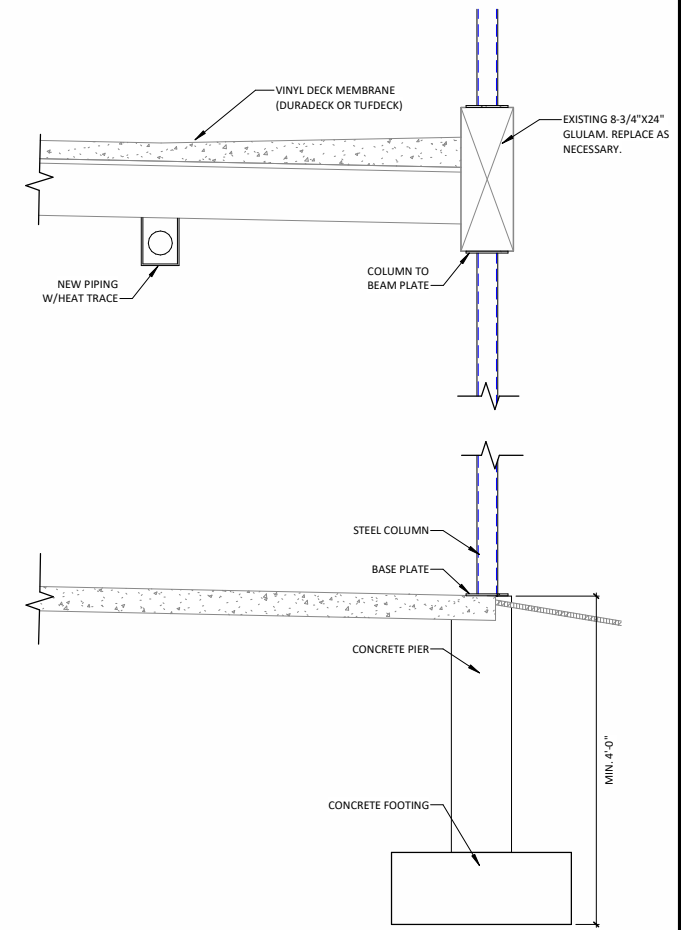
7 UNIT PLAN O CAMERA VIEW 4



1 UNIT PLAN S CAMERA VIEW 4



① UNIT PLAN O PERSPECTIVE OVERVIEW



③ TYPICAL SECTION @ COLUMN
NTS



② UNIT PLAN S PERSPECTIVE OVERVIEW



KALISPELL 406-755-3208
BOZEMAN 406-588-0707
VANCOUVER 360-852-8748
info@jackola.com jackola.com

**- TASK 3 -
VIABLE
OPTIONS**

NOT FOR CONSTRUCTION

THE INFORMATION CONTAINED HEREIN IS PROPRIETARY. THIS DOCUMENT MAY NOT BE USED OR REPRODUCED WITHOUT THE WRITTEN CONSENT OF JACKOLA ENGR. & ARCH., P.C.

**WATERSIDE BLDG 3
BALCONY REPAIR OPTIONS**

7175 US 93 S
LAKESIDE, MT, 59922

DRAWN: LWB CHECKED: IMP

DATE: 8/7/2024

REVISIONS:

**PERSPECTIVE
OVERVIEWS
OPTION 2**

SK-203

PROJECT # Project Number